

Harbour Court

Location: Portscatho

Accommodates: 2

cornwalls
cottages.co.uk



1 Harbour Court in Portscatho is a simple, modernised and well presented one bedroom ground floor apartment situated within a stones throw of the sea front in Portscatho having views over the sea. Offering fantastic value for a couple wanting to stay on the Roseland, Harbour Court is right in the heart of Portscatho with the local shop, butchers and pub only a few steps away.

The middle of Portscatho is a wonderful place to stay. A lovely little Cornish fishing village with a lot of history, Portscatho is now also well known for its artists. With its superb light the coastline is a picture post-card everywhere you look. For walkers, you could not be in a better place. The coastal path literally passes outside your front door and there are miles of coastline to explore.



Please do bear in mind that 1 Harbour Court is located next door to the Portscatho Harbour Club and across the road from the Plume of Feathers pub so on occasions, it can be lively at night. The property does have double glazing throughout for those who wish to ensure they are not disturbed.

Accommodation

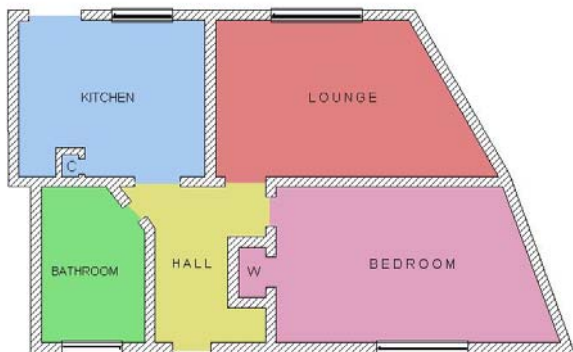
The apartment is all at ground floor level. The entrance hall leads to the lounge with its comfortable wicker sofa and easy chairs. There are restricted views to the harbour. The well presented kitchen has a range of fitted units and also restricted views of the harbour. There is access to the shared outside patio area which has views of the harbour. The double bedroom is to the rear of the property. There is also a simple bathroom with bath and over bath electric shower.

Facilities and Services

Linen and towels are included. Electricity is included. Heating is through night storage heaters and panel heaters. The kitchen has an electric oven with hob, microwave and fridge freezer. Please note that there are no clothes washing facilities at Harbour Court.

Miscellaneous Dogs are welcome. Regrettably no smoking. There is a local shop, butchers and post office in Portscatho. The Plume of Feathers PH is right in the middle of the village and the Royal Standard PH at Gerrans is a short walk away. There is limited car parking in the middle of Portscatho, but the village car park is a short walk away.

Arrival / Departure is Friday



Schematic Diagram Only - Not To Scale



Web: www.cornwallscottages.co.uk

Email: info@cornwallscottages.co.uk

Tel: 01872 264441

Cornwalls Cottages Ltd, The Coach House, Carclew St, Truro TR1 2DZ