

Carvinack Cottage

Location: St Just in Roseland
Accommodates: 6

cornwalls
cottages.co.uk



Imagine waking in a rustic stone cottage, pulling back the curtains and seeing one of the Roseland Peninsula's most idyllic valleys. Carvinack Cottage is a truly special place, surrounded by organic farmland yet only a few minutes drive from St Mawes, Portscatho or the King Harry Ferry. For those in search of peace and tranquillity, yet ideally positioned for all the attractions of the Roseland, there is simply no better place than Carvinack.

This lovely old Cornish stone barn has been tastefully converted to provide a real character place to stay with all the comforts of home. Carvinack Cottage is situated about 300 yards from the Owner's house at Carvinack along a private drive. The cottage is hidden from the road and only has the Owners drive going past and some stables about 100 yards away. The cottage has a raised patio area with access to a lower private garden, which is the perfect place to quietly read a book or privately entertain a group of friends around the built in BBQ. On clear Cornish evenings, enjoy crystal clear views of the night sky without the effects of streetlights!



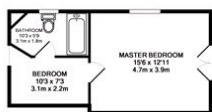
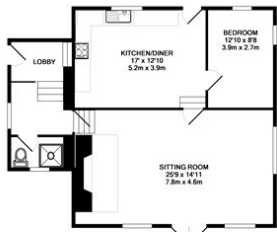
Accommodation

Ground Floor: The entrance porch leads to the large lounge / dining room with large wood burning stove in an impressive stone fireplace. There are lovely views over the countryside and access to the patio area through a French window. There is also a shower/WC on the ground floor.

Lower Ground Floor: Fully fitted kitchen with breakfast table & stable door out to the front garden. A twin bedroom leads off with views overlooking the valley.

First Floor: Main double bedroom with views over the valley with a bunk bed area and bathroom / WC.

External: Patio garden with furniture to the rear and steps down to the lower garden area with further seating and the built in BBQ.



While every effort has been made to ensure the accuracy of the floor plan contained herein, measurements of floor, window, doors and ceiling, items are approximate and the responsibility for any error, omission or misstatement lies with the guest. The plan is not intended to be a legal document and is provided for information only. It is not intended to be a legal document and is provided for information only. It is not intended to be a legal document and is provided for information only.



Facilities & Services

Heating is via night storage heaters and the wood burning stove in the lounge. There is a TV & DVD/CD player in the lounge. The kitchen is fully fitted with a fridge / freezer, washer drier machine, microwave & electric oven & hob. WiFi is available at the cottage.

Miscellaneous

Inclusive electricity and heating. A basket of logs for the wood-burner are provided free of charge, thereafter logs are available from the Owners. Bed linen is provided but you must bring your own towels. There is a private garage for one car (subject to availability from the Owner) and a private parking area for a further 2 cars. We regret that there is no smoking allowed but well behaved dogs are permitted at a small additional charge.

Nearby

The tiny tranquil Cornish village of Philleigh is nearby and is famous for its sixteenth century pub, The Roseland Inn. Portscatho & St Mawes are also within 10 minutes of Carvinack and offer some lovely beaches & plenty of water sports. Portscatho has a good general store, a Post Office plus a couple of pubs & restaurants at the nearby hotels. St Mawes has plenty of facilities including a few hotels with fine restaurants including the famous Hotel Tresanton, plus a few pubs, a good Co-op general store, a butchers, chemist & post office.

Arrival / Departure is on a Friday and short breaks are available at certain times.

Web: www.cornwallscottages.co.uk
Email: info@cornwallscottages.co.uk
Tel: 01872 264441

Cornwalls Cottages Ltd, The Coach House, Carclew St, Truro TR1 2DZ